

December 2023



ARBORISTNOW
URBAN FORESTRY



*Friends of St. Francis - Bug Hotel and Hut
Made with Monterey Cypress and packed with bamboo, bark and twigs.*

News from the Urban Forest

Cozy up with our December tips! Unwind with our newsletter packed with vital winter wisdom and timely insights to carry your landscape through winter and beyond!

[Visit Our Website](#)

Project Highlight



Protecting Downtown Trees in Albany

Our team recently cared for 15 Peppermint Eucalyptus trees lining a high-traffic area in Albany's bustling downtown. To minimize safety hazards for constant pedestrian activity below, we followed specialized prescription plans crafted by a third-party consulting arborist.

These plans involved removing deadwood, reducing end weight, and selectively pruning back heavy branches. The goal was twofold: ensure public safety while retaining each tree's natural form and beauty. Meticulous care like this shows our dedication to building thriving, hazard-free tree populations across the communities we serve. We take pride in safeguarding the iconic trees that make neighborhoods like this Albany hub so captivating while allowing residents and visitors to fully enjoy gathering spaces.



[Get Storm-Ready with Winter Tree Care](#)



With winter storms ahead, now is the ideal time to ensure your trees withstand wind, rain, and other seasonal threats.

Have one of our ISA Certified Arborists conduct a thorough tree inspection, checking for:

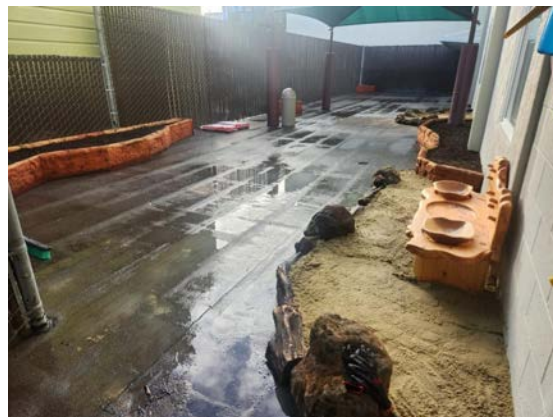
- Damaged branches
- Weak branch attachments
- Decaying trunks/limbs
- Poor tree architecture

We'll provide expert safety pruning and cabling to enhance structural integrity and reduce storm damage risks. This involves strategically removing problematic branches to:

- Lessen wind resistance
- Allow wind/rain to better flow through
- Lighten excess weight
- Improve overall health

Take advantage of mild weather for vital winter tree care. Schedule an inspection before [storms](#) hit and rest easier knowing your trees can handle whatever comes. Protecting your beloved trees and landscape is our specialty – [contact us today](#) to be prepared for the weather ahead.

Reimagining Urban Spaces: *Custom Millwork Sustainable Landscaping*



A "mud Kitchen" created by SAS installed inside one of the sandboxes.

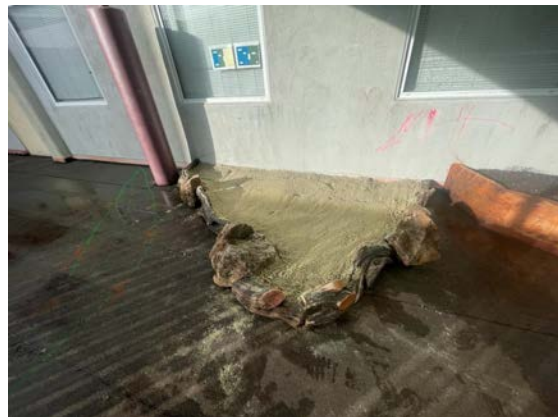
We are excited to give an update our eco-friendly collaborative effort with the Low Income Investment Fund (LIIFund) and the [Scientific Art Studio \(SAS\)](#) project.

Here are handcrafted planters and sandboxes, meticulously constructed from Redwood for the SAS projects. These creations are more than just visually appealing; they're a testament to our commitment to environmental responsibility. For the planters and sandboxes without natural rocks and logs, our team engaged in a detailed process of [milling](#), cutting, and carving the necessary pieces. We then securely anchored them to the ground, adding layers of weed fabric and drain rock, topped with nutrient-rich soil. These planters are now ready to be filled with vibrant plants, which will be added towards the completion of the project.

In a unique twist, we've also incorporated a neat feature: sandboxes bordered with tea tree logs and boulders. These aren't just ordinary sandboxes; they've been carefully treated with weed fabric and drain rock, and filled with sand to create a safe and engaging play area.

A standout addition to this project is the "Mud Kitchen," ingeniously created by SAS. This imaginative play space has been installed within one of the sandboxes, offering a creative and interactive experience for children. It's a perfect example of how we can blend fun, functionality, and eco-consciousness in our projects.

We hope this update leaves you as excited and inspired as we are about our sustainable initiatives and creative collaborations. Stay tuned for more updates on our journey towards a greener future!



Prepare for Winter with Landscape Care



Pruning, irrigation, wintertime color, fence repair and more!

San Francisco's rainy season doesn't mean your landscape goes completely dormant. Take advantage of the cool weather to prep your yard for a verdant spring awakening.

Our Bay Area experts recommend essential care like:

- Planting pansies and violas to welcome winter color
- Clearing leaves and debris to minimize soggy messes
- Aerating and topdressing lawns as they slow their growth
- Adjusting irrigation schedules to match cooler, wetter days
- Applying organic dormant spray oils to protect trees

We also tackle necessary seasonal maintenance:

- Checking drainage and gutters to control runoff
- Renewing mulch layers to limit erosion and weeds
- Pruning trees and shrubs to remove damaged branches
- Inspecting fences/structures for any needed repairs

- Cleaning outdoor surfaces to limit slip hazards

Don't leave winter prep to chance – our expert landscaping team has you covered! Contact us to guarantee your yard thrives this winter and flourishes next spring!

Arborist Now Blog

Have you checked out our [blog](#) lately? It is full of tree, landscaping, and milling information. We're introducing guest writers and updating a long list of prior posts. If there's something you're like to read in our blog, let us know!

Before you deck those boughs, read this! Get helpful tips on safely illuminating your trees without harm from Arborist Now's article: [Wrapping Lights Around Your Trees: The Do's and Don'ts](#).



From Lights to Logs: Festive Greenery Trivia

1. Which of these evergreen trees is most commonly used as a Christmas tree? a) Fir b) Pine c) Spruce d) Juniper
2. In the song “O Christmas Tree”, what other name is the Christmas tree referred to as besides just “Christmas Tree”? a) O Evergreen Tree b) O Holiday Tree c) O Tannenbaum d) O Decorated Tree
3. Which of the following is NOT commonly used as a Christmas wreath? a) Holly b) Pinecones c) Mistletoe d) Rosemary

4. On the first night of Hanukkah, some families burn a large log to last for the whole 8 days. What is this ceremonial log called? a)

Menorah log b) Maccabee lo c) Shamash log d) Festival log

5. In winter solstice traditions, what unseasoned wood is often burned to bring good luck in the coming year? a) Oak b) Birch c) Ash

d) Pine

Trivia Rules

The **first 3** people to email the correct answers to each of these questions wins! The first place winner will receive a **\$200 voucher for any tree service!** Second and third place winners will receive a **\$100 voucher for any tree service!**

*Past FIRST place winners may play for fun; however, only one FIRST place win per person in a 12 month period. 2nd and 3rd runners up may try again in hopes of achieving first place status; however, they may only win one \$100 voucher per 12 month period.

Please email email your answers to news@arboristnow.com with "Quiz Answers" in the subject line.

Good luck!

NOVEMBER QUIZ/ANSWERS

1. Which tree is often dubbed the "wishbone" of the forest because of its association with Thanksgiving and its historical importance to Native Americans and early settlers?

a. Oak

2. Which tree is famous for its vibrant red and orange leaves during the fall season, making it a favorite for autumn enthusiasts?

c. Maple

3. Which fruit, often associated with traditional Thanksgiving dishes, is a favorite treat during the fall but doesn't actually grow on trees?

c. Cranberry

4. The first Thanksgiving feast between the Pilgrims and the Wampanoag tribe in 1621 likely saw which tree's wood used for fire and construction?

c. Oak

5. Which tree, often seen as a symbol of strength and endurance, is also considered a tree of gratitude, making it a perfect emblem for Thanksgiving reflections?

a. Oak

Joke of the Month

Why did no one want to decorate the crabapple tree?

It had bad ornamental value.

(The sillier the better for a festive

newsletter! :))



Happy Holidays!



Wishing you a holiday season that shines as bright as a star atop an evergreen. Happy holidays from your friends at Arborist Now!

We Appreciate *YOUR* Feedback

Tell us how we're doing!



Philihp B.

📍 851 🌟 39 🗨️ 4



12/1/23



Robinson and his team came and processed a felled cedar trunk that we felled in our back yard today. We wanted to save this valuable wood and use it for home repairs, but we were in a bind about how to move a log this big to a mill. They had the perfect tool for the job which I can only describe as like a chainsaw on rails. They cleaned up the yard afterward of sawdust and were courteous and respectful the entire time. Highly recommend!

Thank

Comment

Direct message



Your reviews are vital in helping us enhance our services. We appreciate your feedback about your experience with us. Please consider leaving a review using the provided links. Thank you for your valuable input!

[Yelp](#)

[Google Reviews](#)

Your review is crucial to helping us serve you better (and you can earn \$100!). Please take a moment to share your valuable feedback using the links below. Thank you for your contribution to our continuous improvement efforts.

[Client Referral Program](#)

From the Field







Thank *you* for being part of the **Arborist Now** family! We appreciate *you* very much!

Arborist Now, Inc. | 415-310-7781 | news@arboristnow.com | arboristnow.com

STAY CONNECTED



[Unsubscribe elena@arboristnow.com](#)

[Update Profile](#) | [Constant Contact Data Notice](#)

Sent by news@arboristnow.com powered by



Try email marketing for free today!